

Country fact sheet: Czechia

1. Total greenhouse gas emissions

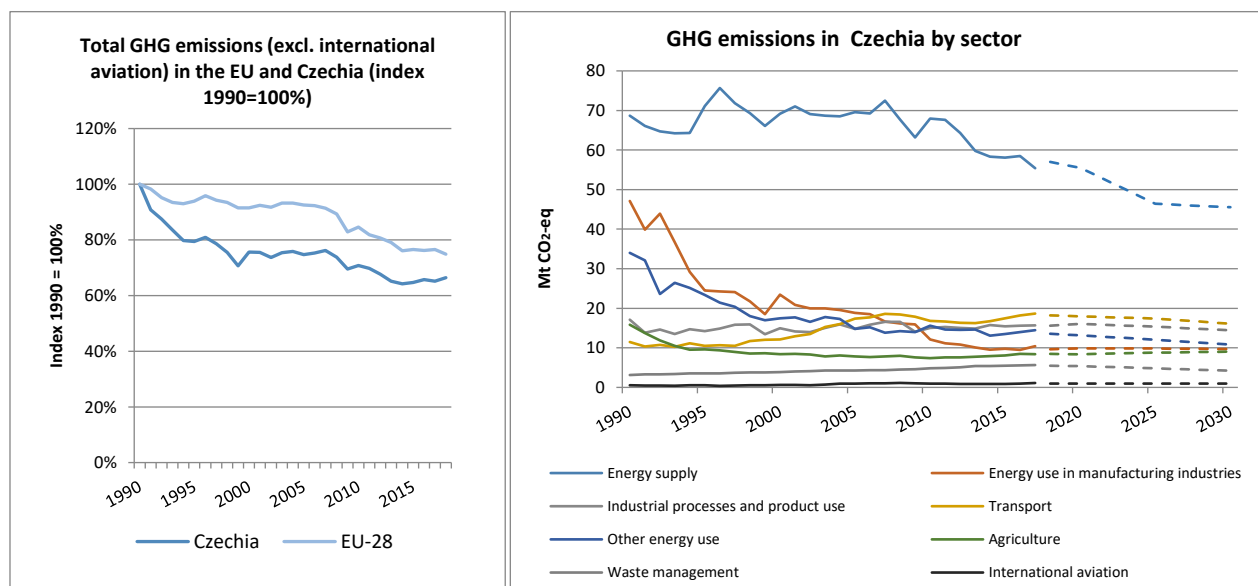


Figure 1: Left hand side: Total greenhouse gas emissions (excl. international aviation) 1990-2018 (index 1990 = 100 %). Right hand side: Greenhouse gas emissions by sector¹ – historical emissions 1990-2017, projections 2018-2030 (Mt CO₂-eq).

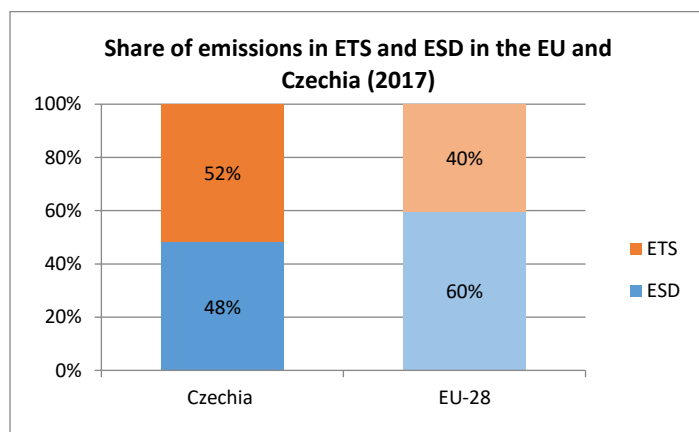


Figure 2: Share of emissions covered by the ETS and the ESD (2017).²

¹ The sectors in the figure correspond to the following IPCC sectors: Energy supply: 1A1, 1B and 1C. Energy use in manufacturing industries: 1A2. Industrial processes and product use: 2. Transport: 1A3. Other energy use: 1A4, 1A5 and 6. Agriculture: 3. Waste: 5. International aviation: memo item.

² Excluding international aviation, CO₂ from domestic aviation and NF₃.

2. ETS emissions

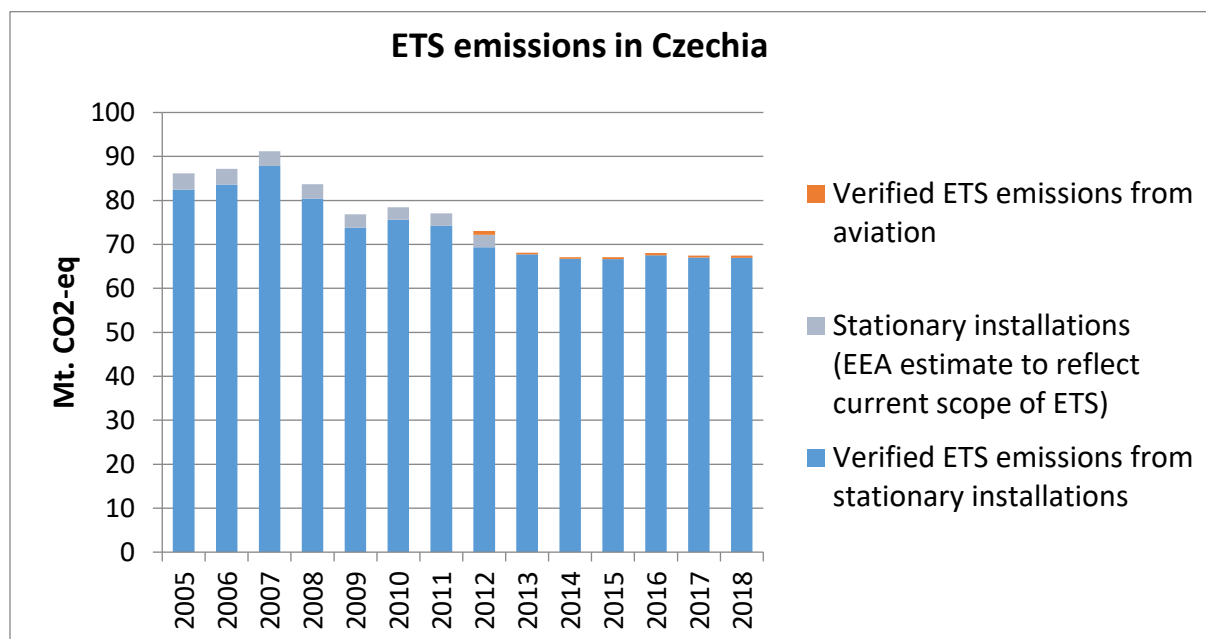


Figure 3: ETS emissions 2005-2018 (Mt CO₂-eq).³

3. Emissions in Effort Sharing sectors

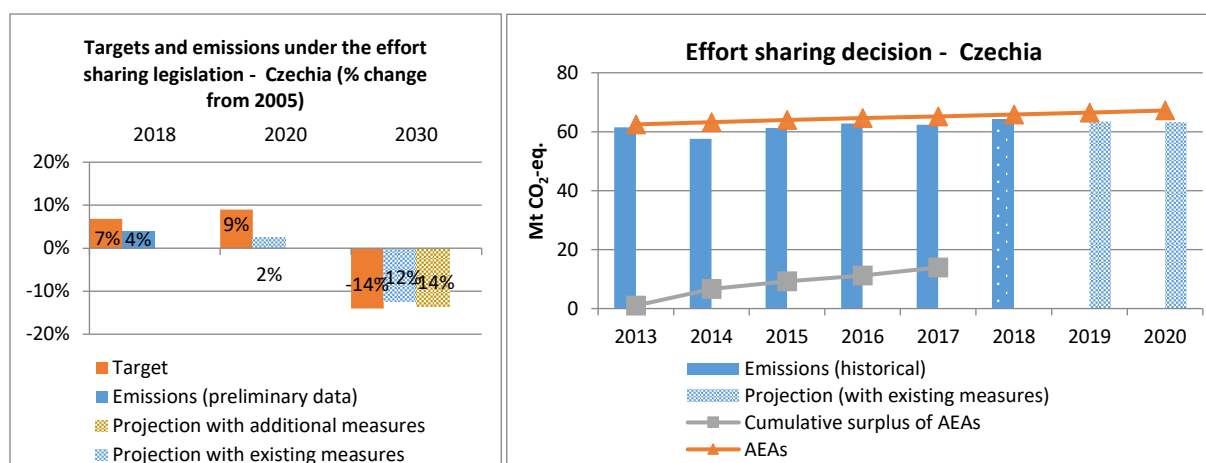


Figure 4: Left hand side: Emissions and targets under the Effort Sharing Decision/ Effort Sharing Regulation 2018, 2020 and 2030 as percentage change from 2005. Right hand side: Emissions, annual emission allocations (AEAs) and accumulated surplus/ deficit of AEAs under the Effort Sharing Decision 2013-2020 (Mt CO₂-eq).

³ The scope of ETS was extended from 2013. To reflect the current scope of ETS, estimates made by EEA are included in the figures from 2005 to 2012. The estimates cover only emissions from stationary installations.

4. Land use, land use change and forestry

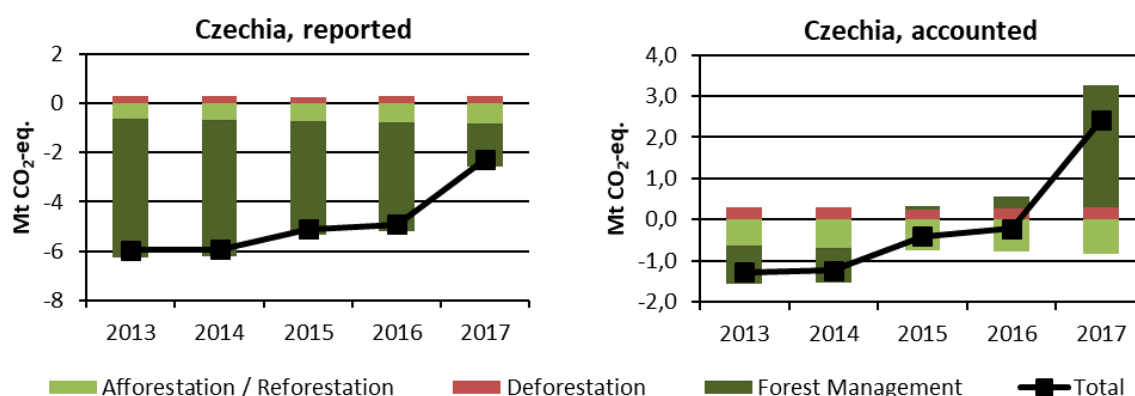


Figure 5: Reported and accounted emissions and removals from LULUCF (Mt CO₂-eq.)⁴

Reported quantities under the Kyoto Protocol for Czechia show net average annual removals of - 4.8 Mt CO₂-eq for the period 2013 to 2017. In this regard, Czechia contributes with 1.2% to the annual average sink of -411.9 Mt CO₂-eq of the EU-28. Accounting for the same period depicts net credits of, on average, -0.1 Mt CO₂-eq, which corresponds to 0.1% of the EU-28 accounted sink of - 111.9 Mt CO₂-eq. Reported net removals show a decreasing trend between 2013 and 2017, with the most marked decrease in 2017. This pattern translates into decreasing credits over the period and year 2017 showing debits. Czechia is one of ten EU Member States that show net debits for at least one year in this preliminary accounting exercise.

Highest reported quantities are removals by Forest Management. Removals by Afforestation/Reforestation are small and emissions by Deforestation can be neglected in the overall emission budget of the LULUCF sector. While reported removals from Forest Management are rather similar in 2013 and 2014 and decreased slightly in 2015 and 2016, they dropped considerably for 2017. Afforestation/Reforestation shows a slightly increasing trend over the five-year period.

Credits by Forest Management between 2013 and 2014 turn into debits for as of 2015. Czechia is one of twelve EU Member States with debits by Forest Management, at least for some years. Credits by Afforestation/Reforestation increase slightly over the five-year period, while debits by Deforestation show steady small amounts.

⁴ The differences between reported and accounted emissions from LULUCF under the Kyoto Protocol are described in the 'explanatory note on LULUCF – accounted and reported quantities under the Kyoto Protocol'.

Data sources

Figure 1: Annual European Union greenhouse gas inventory 1990–2017 (EEA greenhouse gas data viewer: <https://www.eea.europa.eu/data-and-maps/data/data-viewers/greenhouse-gases-viewer>). *Approximated EU greenhouse gas inventory 2017* (European Environment Agency). Member States national projections, reviewed by the European Environment Agency.

Figure 2: Verified ETS emissions abstracted from European Union Transaction Log 21.10.2019 (EEA ETS data viewer: <https://www.eea.europa.eu/data-and-maps/dashboards/emissions-trading-viewer-1>). ESD data from European Commission: *Commission Implementing Decision (EU) on greenhouse gas emissions for each Member State for the year 2017 covered by Decision No 406/2009/EC of the European Parliament and of the Council* (forthcoming).

Figure 3: abstract from European Union Transaction Log 21.10.2019 (EEA ETS data viewer: <https://www.eea.europa.eu/data-and-maps/dashboards/emissions-trading-viewer-1>).

Figure 4: European Commission: *Commission Implementing Decision (EU) on greenhouse gas emissions for each Member State for the year 2017 covered by Decision No 406/2009/EC of the European Parliament and of the Council* (forthcoming). *Approximated EU greenhouse gas inventory 2017* (European Environment Agency). Member States national projections, reviewed by the European Environment Agency.

Figure 5: European Commission based on data accounted and reported by Member States under the Kyoto Protocol.